

WIENERSTRASSE 9, A-7082 DONNERSKIRCHEN

ÜBERSICHTSPLAN

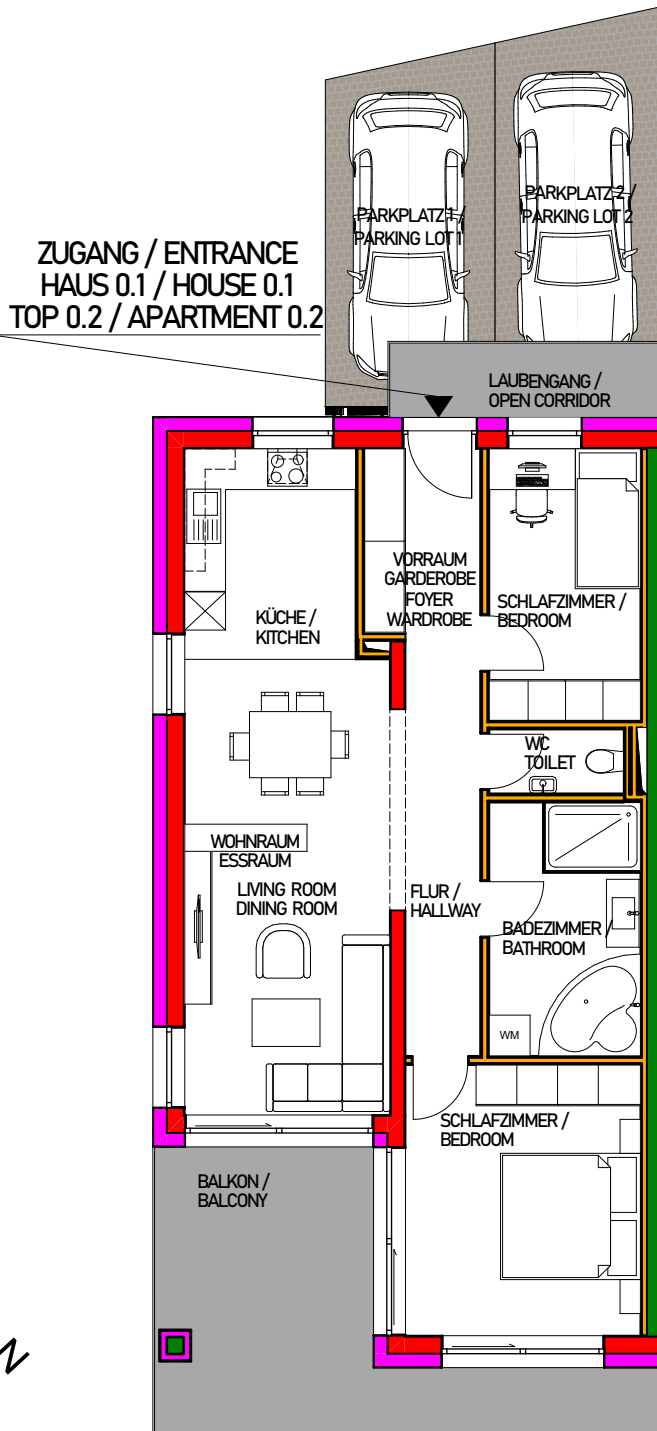
HAUS 0.1

TOP 0.2 - 1.OBERGESCHOSS

LAYOUT

HOUSE 0.1

APARTMENT 0.2 - SECOND FLOOR



HOUSE 0.1 -
APARTMENT 0.2
ca. 73 m²
BALCONY
ca. 18 m²
ENTRANCE
ca. 19 m²
PARKING LOT 1
ca. 13 m²
PARKING LOT 2
ca. 14 m²

HAUS 1 - TOP 2
ca. 73 m²
BALKON
ca. 18 m²
ZUGANG
ca. 19 m²
PARKPLATZ 1
ca. 13 m²
PARKPLATZ 2
ca. 14 m²



Terra Atlas

IMMOBILIEN GMBH